

Appendix 1: Indicator Report

**Climate and Environment Committee, 21 March
2023**

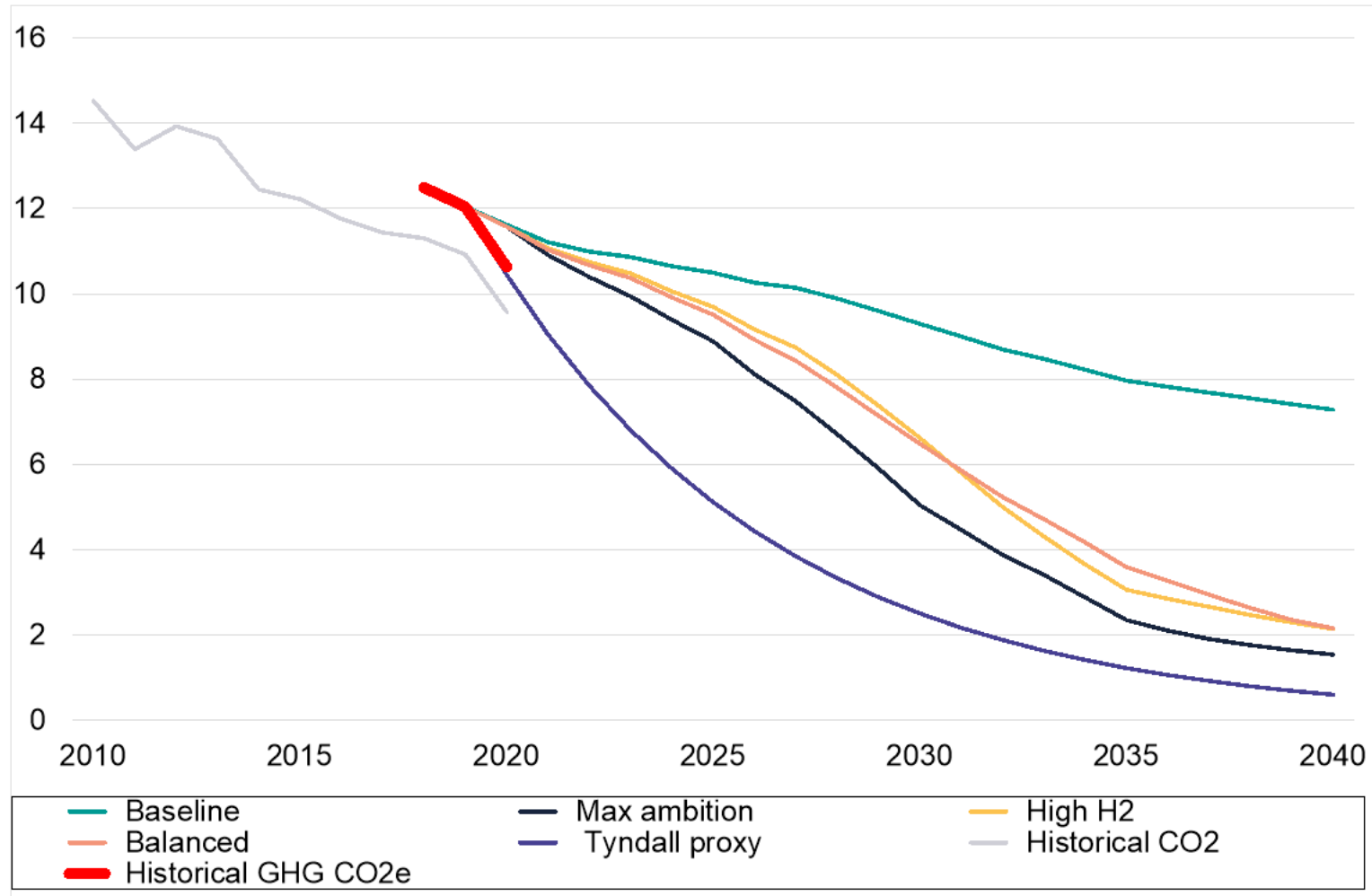
Introduction

- The following slides provide an overview of West Yorkshire's performance and progress against the headline indicators for State of the Region
- A subset of indicators has been presented, reflecting those most directly relevant to the Climate and Environment agenda.
- For some indicators there has been no change in the available data since the last meeting (see covering paper for details of updates) but the latest figures are contained in the pack for consistency.

State of the Region indicators

Emissions fell sharply during 2020, reflecting the impact of the pandemic but this is unlikely to be sustainable

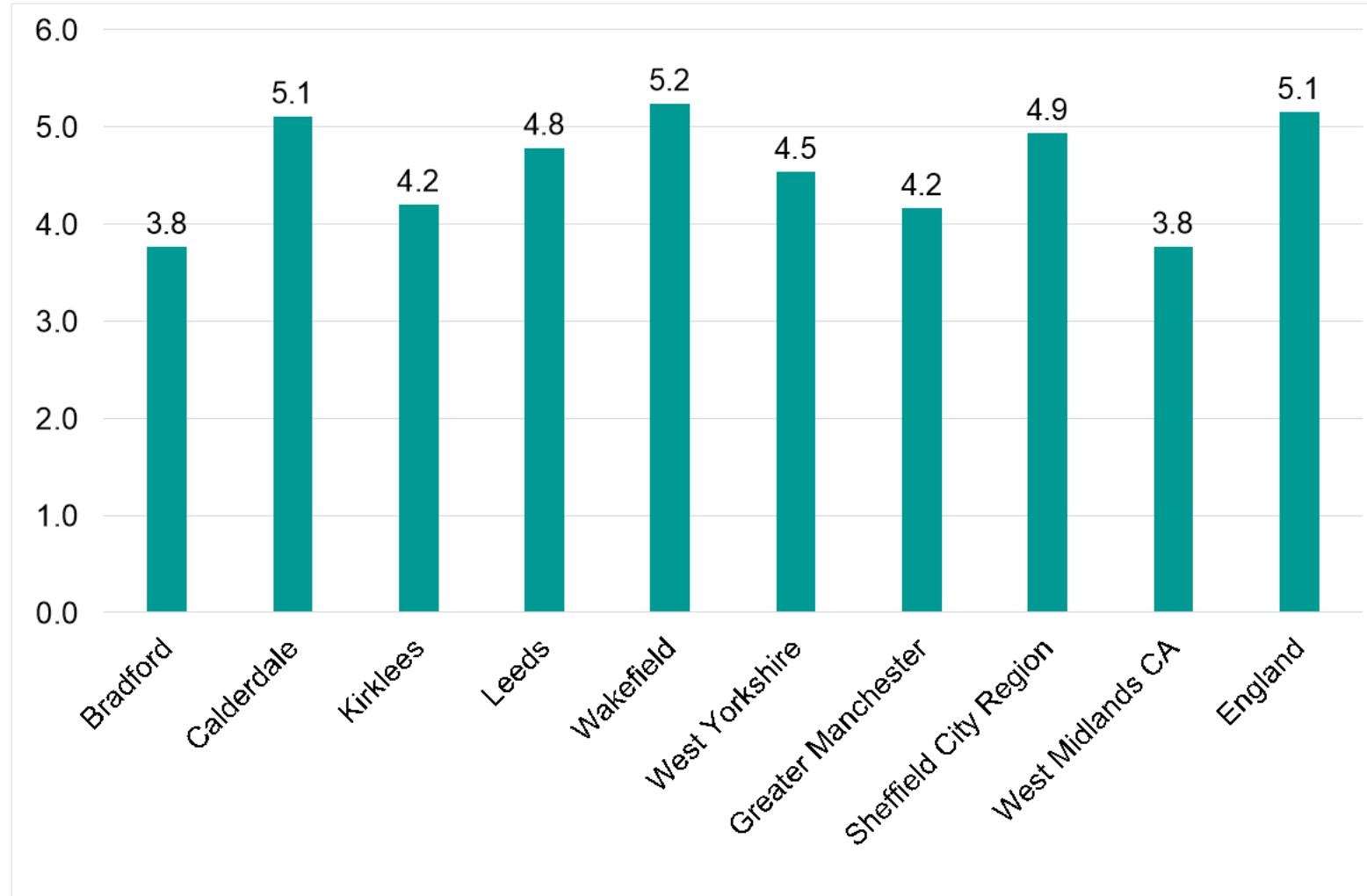
Figure 1: Trend in greenhouse gas emissions vs carbon reduction pathways (MtCO₂e)



Source: UK local authority and regional greenhouse gas emissions national statistics, 2005 to 2020, BEIS

West Yorkshire has lower emissions per capita than the national average

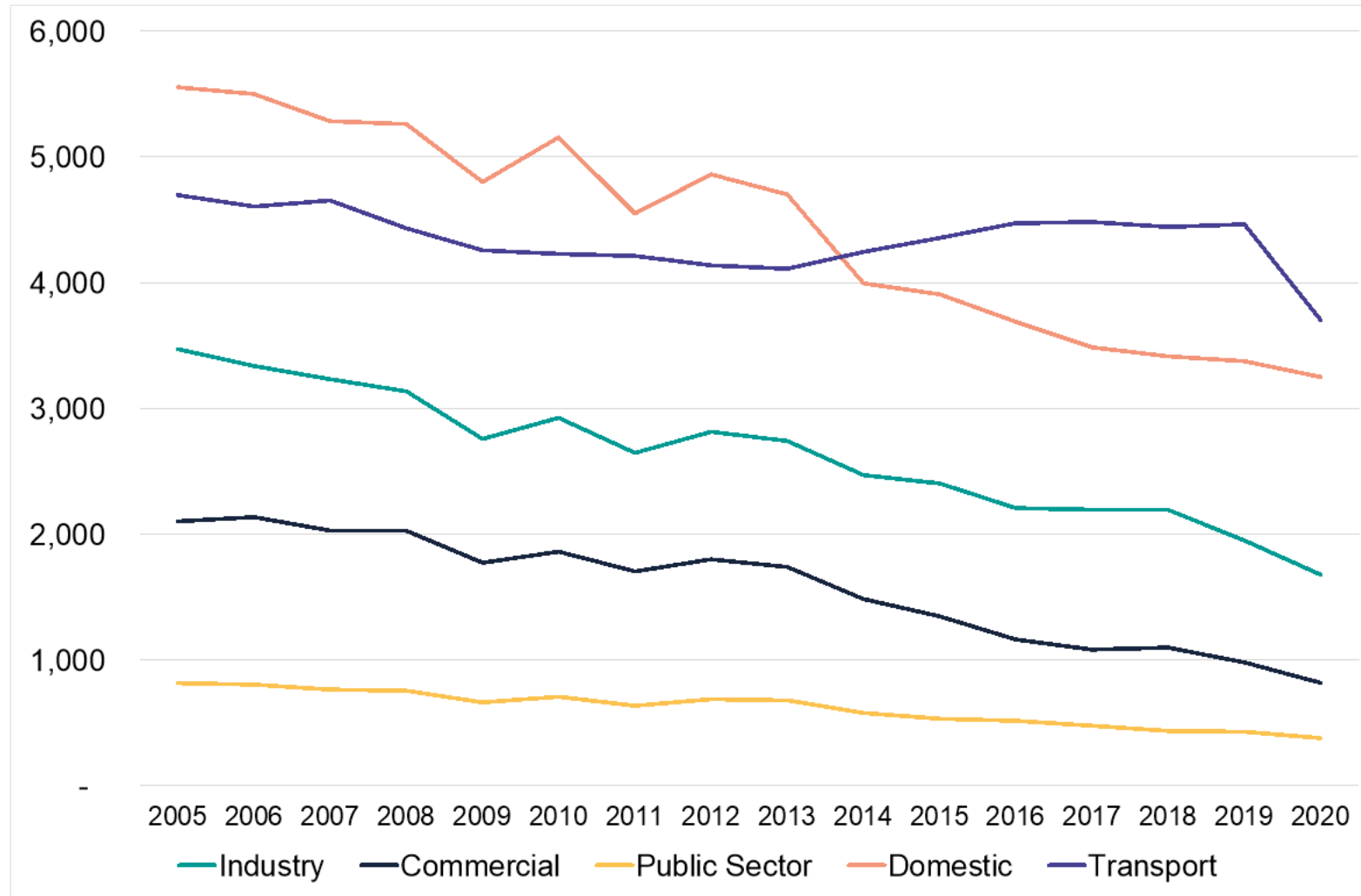
Figure 2: Per capita greenhouse gas emissions (tonnes CO2e per resident), 2020



Source: UK local authority and regional greenhouse gas emissions national statistics, 2005 to 2020, BEIS

All sectors of the economy saw an emissions reduction in 2020, including a sharp fall for transport

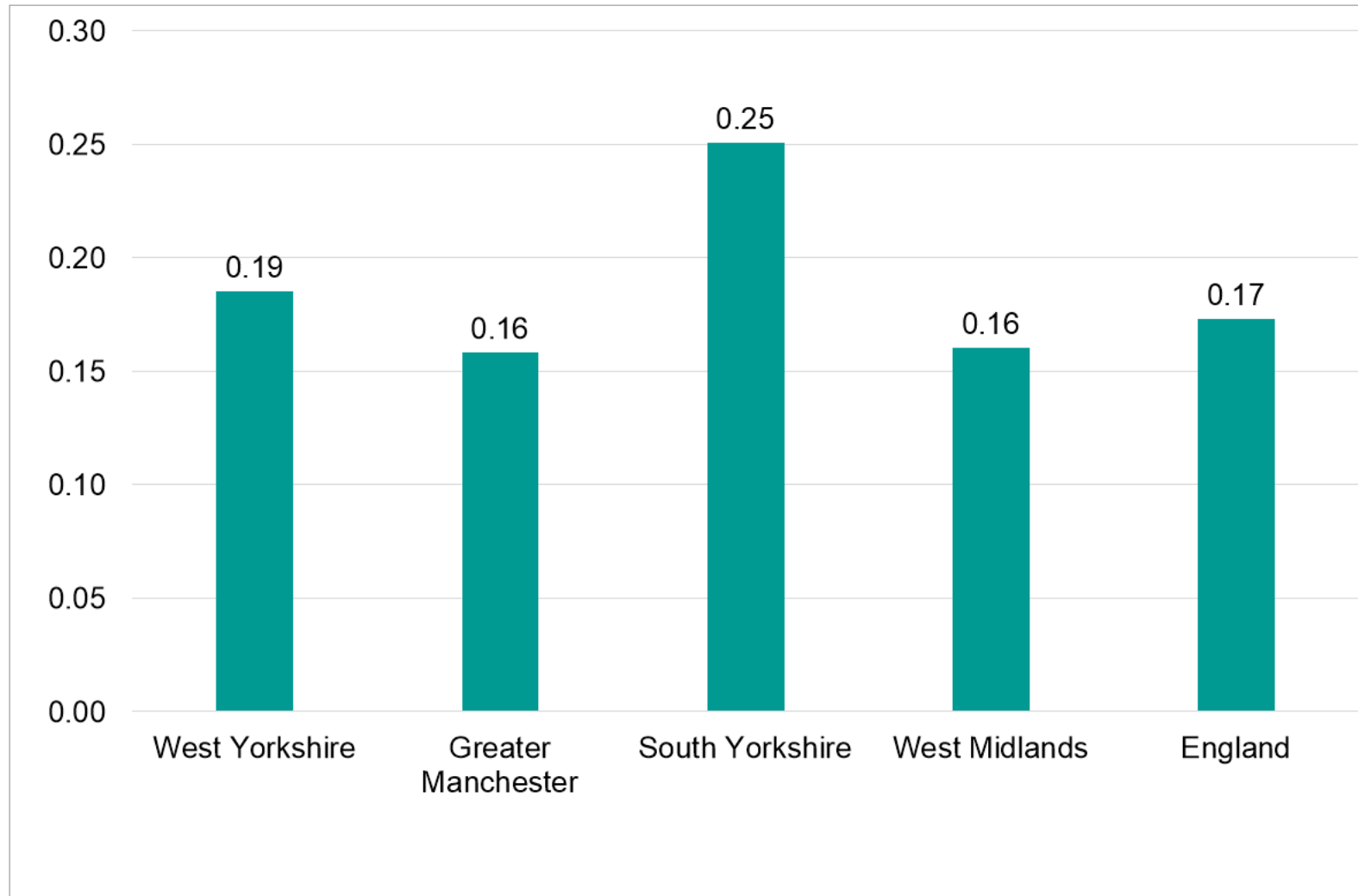
Figure 3: Trend in greenhouse gas emissions by sector, (ktCO₂e), West Yorkshire



Source: UK local authority and regional greenhouse gas emissions national statistics, 2005 to 2020, BEIS

West Yorkshire's emissions intensity is above the national average

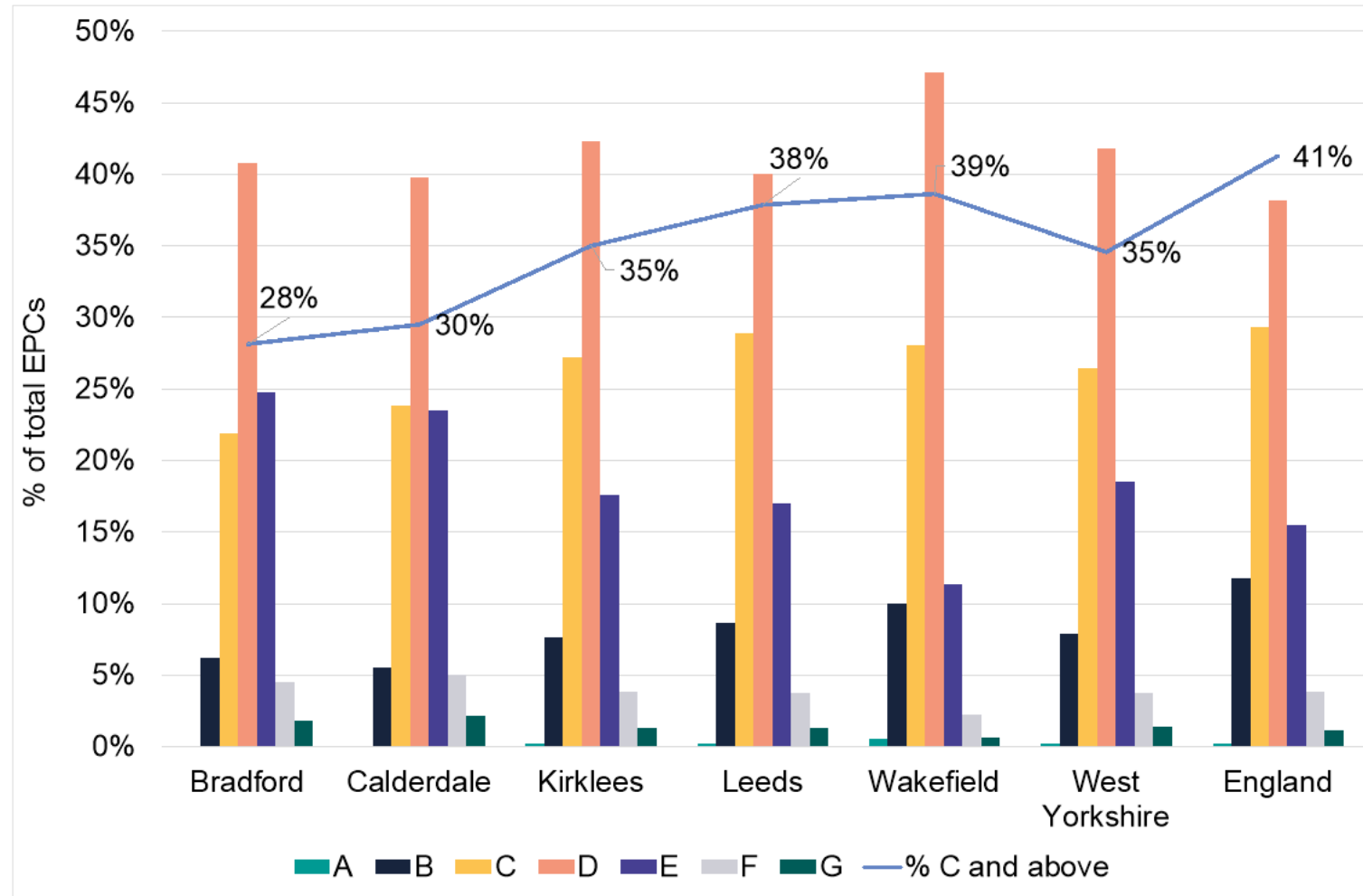
Figure 4: Greenhouse gas emissions intensity (ktCO₂e per £m gross value added), 2020



Source: UK local authority and regional greenhouse gas emissions national statistics, 2005 to 2020, BEIS

West Yorkshire dwellings with an EPC are less likely to have an energy efficiency rating of C or above compared to national average

Figure 5: Profile of Energy Performance Certificates by local authority and Energy Efficiency Rating, as of Q4 2022



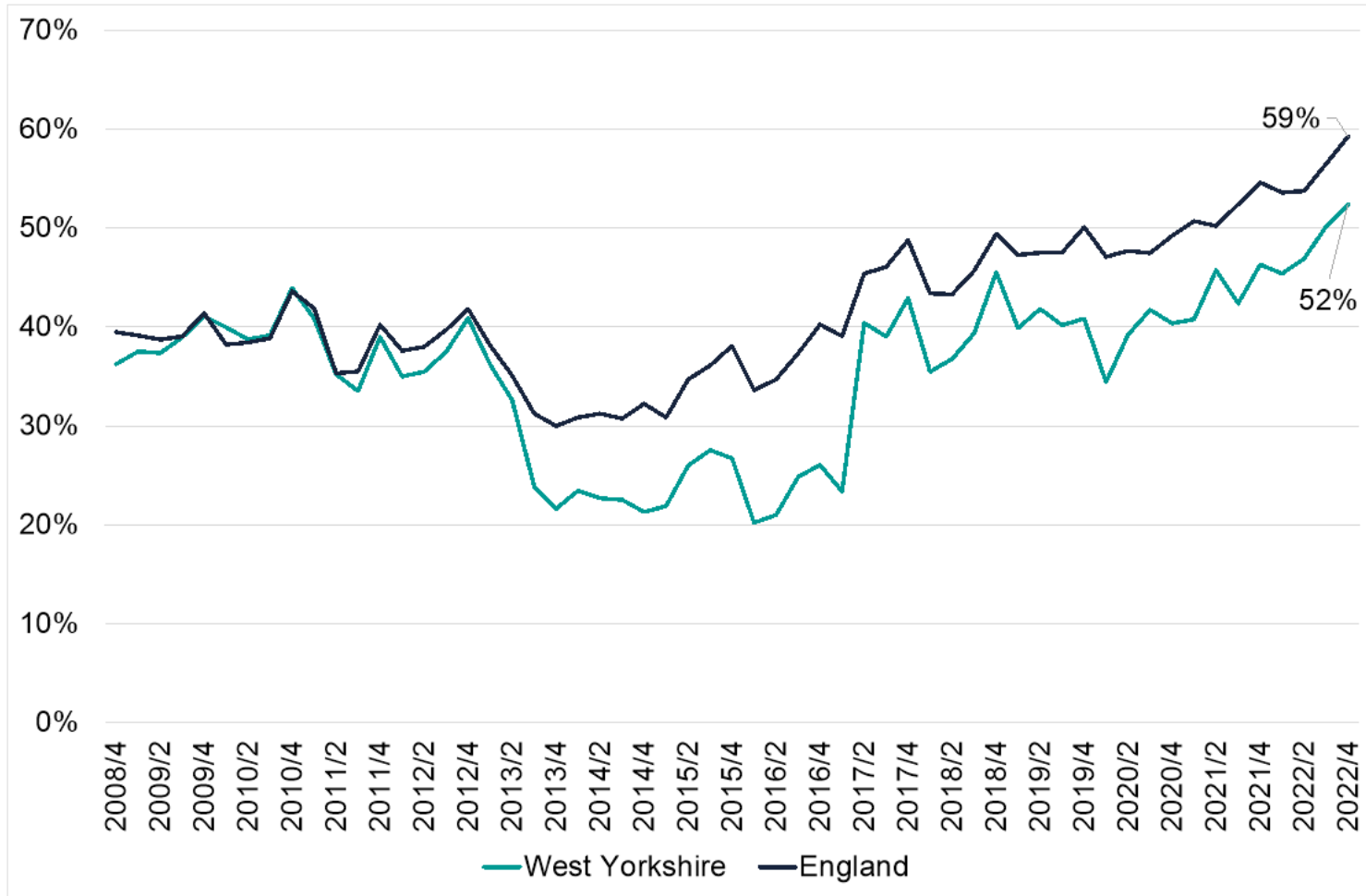
These figures relate to the total stock of EPCs lodged from Q4 2008 up to Q4 2022.

The figure for the cumulative proportion of WY dwellings with an EPC rating of C and above has increased slightly, according to latest figures, to 35% (from 34% reported in State of the Region). National average has increased from 40% to 41% for same period.

Source: Energy Performance Certificate data, Department for Levelling Up, Housing and Communities

The proportion of EPCs with a rating of C and above in WY is increasing over time, reaching 52% in lodgements for Q4 2022

Figure 6: Trend in proportion of Energy Performance Certificates with Energy Efficiency Rating of C and above based on each quarter's EPC lodgements



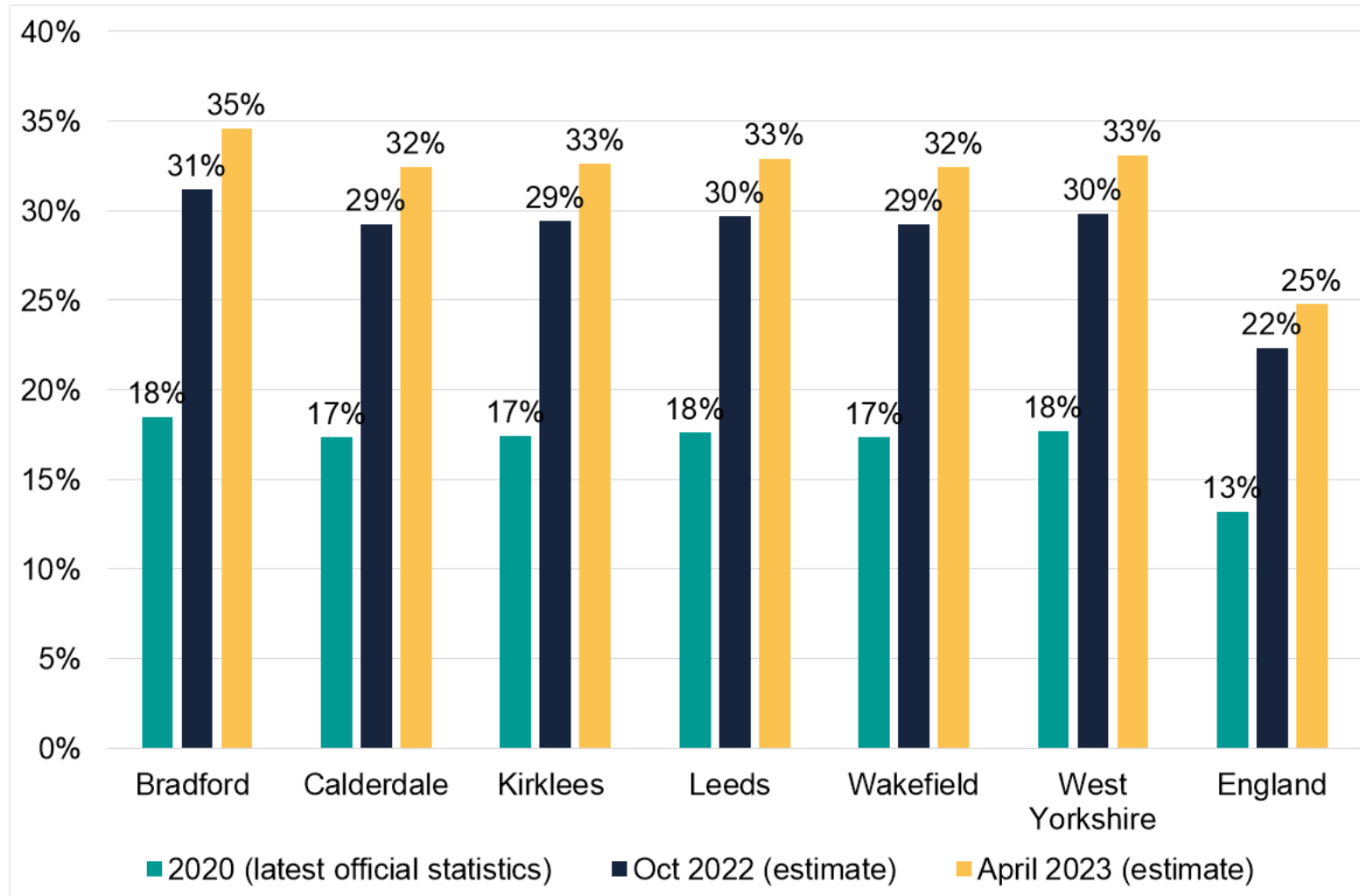
These figures relate to EPC lodgements in each quarter.

Although the proportion of EPC's with a rating of C and above in West Yorkshire is increasing, suggesting a contribution to improved energy efficiency performance, it is still lower than the national average.

Source: Energy Performance Certificate data, Department for Levelling Up, Housing and Communities

Prevalence of fuel poverty is projected to increase further in April 2023

Figure 7: Proportion of households in fuel poverty

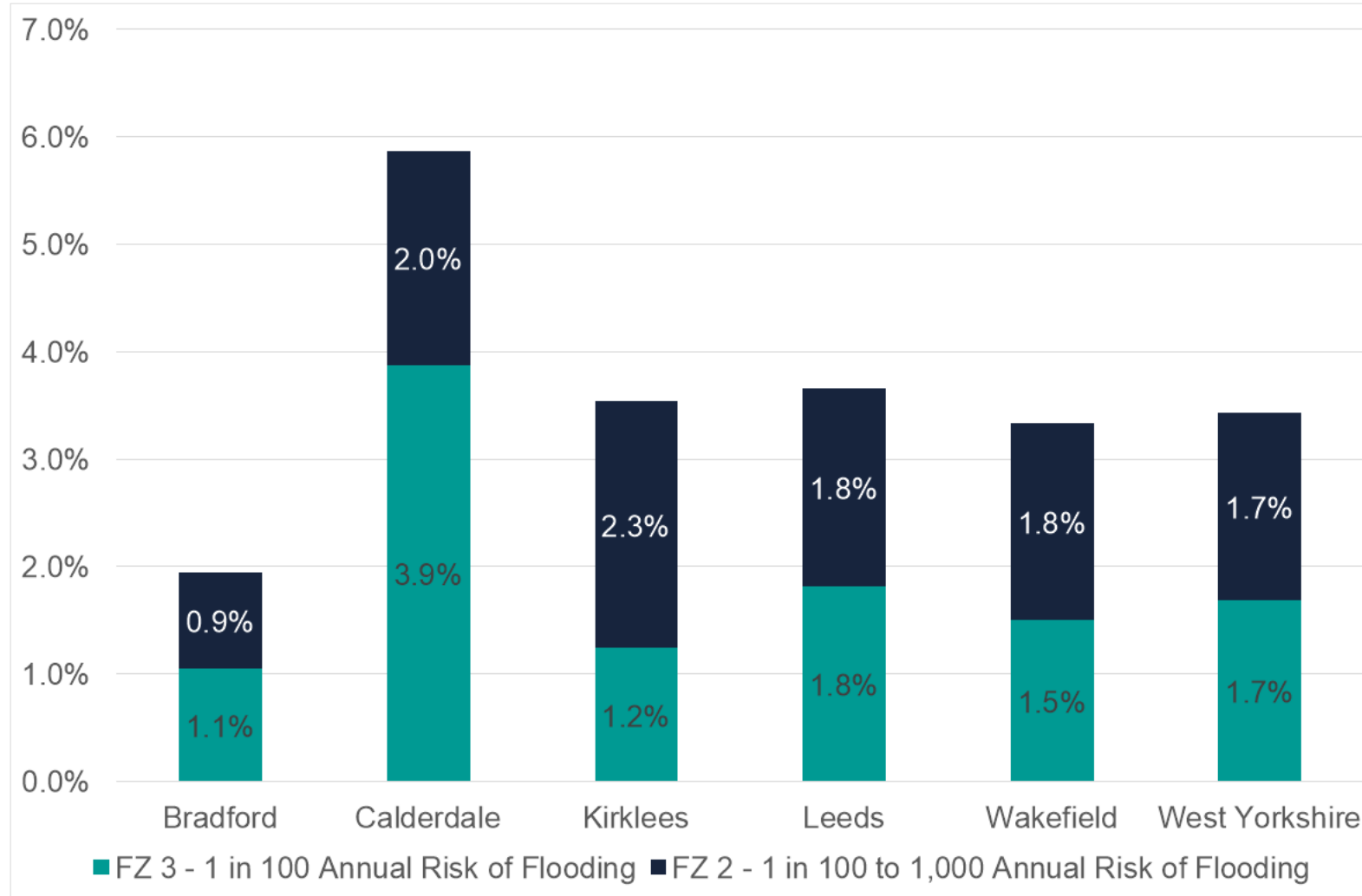


Based on calculations by the End Fuel Poverty Coalition, a third of households in West Yorkshire are projected to be in fuel poverty by April of this year. This assumes that the level of the Energy Price Guarantee increases to £3,000 in April, as currently expected.

Source: Sub-regional fuel poverty statistics, BEIS; End Fuel Poverty Coalition

3% of residential properties in West Yorkshire fall within a flood zone, rising to more than 6% in Calderdale

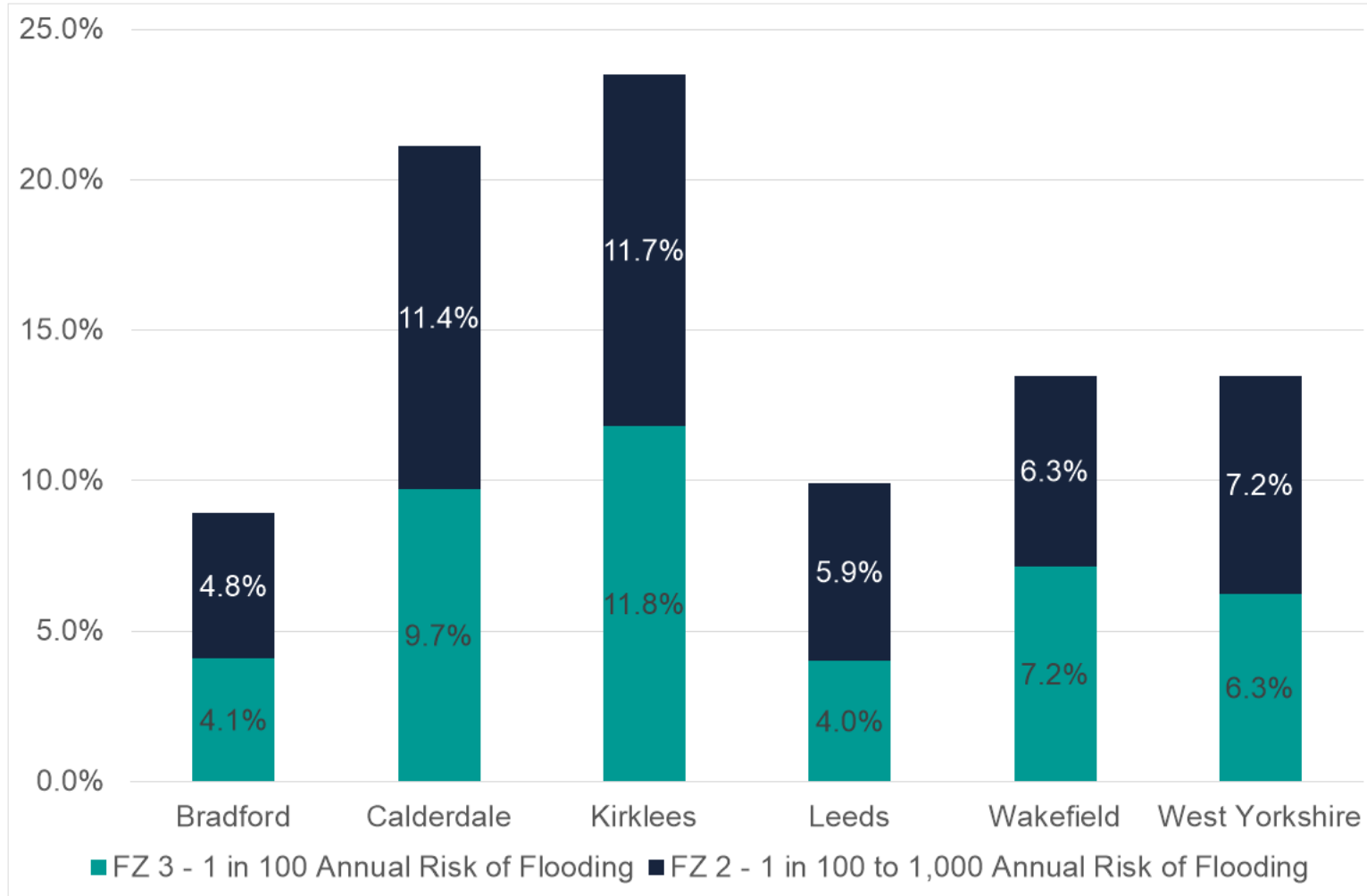
Figure 8: Proportion of residential properties in flood zones



Source: Environmental Agency, ONS Mid-Year Population Estimates

13% of commercial properties in West Yorkshire fall within a flood zone, rising to 24% in Kirklees

Figure 9: Proportion of commercial properties in flood zones



Source: Environmental Agency, ONS Mid-Year Population Estimates